

# HLA C 0602 ToolSet™ for LightCycler™ (HLA Cw 0602, Psoriasis)

Lyophilized ToolSet for PCR using the LightCycler™ Instrument.

**Order#: HLA C 0602**

1 ToolSet for 16 reactions

Store at 4°C, protected from light.  
Exposure to light may especially damage  
the Oligotool™ tube (vial with red cap).

**For use with LightCycler Fast Start DNA Master SYBR Green, 10 x conc.** (Roche Cat.No.: 03003230001)

## 1. ToolSet contents

Vial	Label	Content	Quantity
			<b>HLA C 0602</b>
<b>1, Red cap</b>	<b>OligoTool</b>	- lyophilized oligos for PCR - contains a primer set for HLA C 0602 and a primer set for Factor II as amplification control	For 16 tests  Dissolved: 50 µL
<b>2 A–B , Green caps</b>	<b>2 Controls</b>	- <b>A</b> : lyophilized HLA C 0602 <b>positive</b> DNA - <b>B</b> : lyophilized HLA C 0602 <b>negative</b> DNA	Dissolved: 20 µL
<b>3, Blue cap</b>	<b>Solvent</b>	- to dissolve OligoTool / Control	1000 µL of Solvent

Additional equipment and reagents required but not supplied :  
LightCycler DNA Master SYBR Green, 10 x conc. Cat.No.: 03003230001, including 25mM MgCl<sub>2</sub>;  
LightCycler instrument, LightCycler capillaries, DNA extraction materials

## 2. Introduction

### 2.1. Product overview

#### ToolSet description

This ToolSet is specifically designed for detecting presence of the HLA C 0602 allele of the human HLA C locus by LightCycler PCR with Melting Curve Analysis. Co-amplification of a sequence of the human Factor II gene serves as internal positive control. The two primer pairs have been optimized for specific amplification of HLA C 0602 (positive if present, yielding a 302 bp segment) and Factor II (yielding a 349 bp segment in absence of HLA C 0602, but suppressed in presence of HLA C 0602).

#### Control material

- **A** : HLA C 0602 **positive** DNA, - **B** : HLA C 0602 **negative** DNA, both lyophilized.

#### Storage of ToolSet and Solutions

Store at +4°C when lyophilized, protected from light.  
The unopened lyophilized ToolSet is stable at +4°C for 12 months from date of manufacture if protected from light. When dissolved store at +4°C for a maximum of 4 weeks, or at -20°C for longer periods (months), protected from light. Avoid freezing and thawing.

### 3. Preparation for LightCycler PCR

**Toolset preparation**      **Dissolve** the content of the **OligoTool** tube (Red Cap) with **50 µl of Solvent**.  
**Dissolve** the content of the **Control** tube (Green Cap) with **20 µl of Solvent**.

1. Before opening tubes, centrifuge them quickly.
2. Add Solvent into OligoTool tube and Control tube as above.
3. Recap tubes, vortex gently.
4. Before opening tubes, centrifuge them quickly.
5. Proceed to Reaction Mix preparation.

**Primers ?**      You don't have to add extra primers, they are already contained in the OligoTool.  
**Probes ?**      You don't have to add probes, this setup does not require probes.

**Reaction Mix Preparation**      For 1 (One) reaction, prepare the Reaction Mix as shown in the following table :

Reagent	µL
OligoTool HLA C 0602, dissolved	2.8
Solvent HLA C 0602	9.6
MgCl <sub>2</sub> 25 mM	1.6 (final 3 mM)
Fast Start DNA Master SYBR Green 10x	2
Total Reaction Mix	16
+ Your DNA or Controls HLA C 0602	4
<b>Grand Total</b>	<b>20</b>

Use Fast Start DNA Master SYBR Green 10x and MgCl<sub>2</sub> 25 mM from Roche LightCycler DNA Master SYBR Green, 10 x conc. (Roche Cat.No.: 03003230001, including 25mM MgCl<sub>2</sub>).  
 For multiple reactions, multiply the indicated volumes appropriately.

**Positive Control**      Always run positive controls with the samples. Use the dissolved Controls **A : HLA C 0602 positive DNA** and **B : HLA C 0602 negative DNA** both contained in the ToolSet (Green Caps).

**Negative control**      Always run a negative control with the samples. To prepare a negative control, replace the template DNA with Solvent (Blue Cap).

**Extraction of genomic DNA**      You can use different Kits for DNA isolation, either with a manual method or with an automated system. The elution buffers should be salt-free. Example : Roche High Pure PCR Template Preparation Kit (Cat.No. 1 796 828)

**Application**      The **HLA C 0602** ToolSet™ for LightCycler™ allows the detection of the **0602 allele of the HLA-C locus which is strongly associated with Psoriasis**. (Reference :Harden J. The Immunogenetics of Psoriasis: A Comprehensive Review *J Autoimmun.* 2015 November ; 64: 66–73, PMID 26215033)

Note : This ToolSet was developed for use in life science research only.

#### 4. LightCycler Settings and Experimental Protocol

##### Fast Start Enzyme Activation and DNA Denaturation

Cycle Program Data	Value
Cycles	1
Analysis Mode	None
Temperature Targets	<b>Segment 1</b>
Target Temperature (°C)	95
Incubation time (s)	<b>600</b>
Temperature Transition Rate (°/s)	20
Secondary Target Temperature (°C)	0
Step Size (°C)	0
Step Delay (Cycles)	0
Acquisition Mode	None

##### Amplification

Cycle Program Data	Value		
Cycles	<b>40</b>		
Analysis Mode	None		
Temperature Targets	<b>Segment 1</b>	<b>Segment 2</b>	<b>Segment 3</b>
Target Temperature (°C)	<b>95</b>	<b>70</b>	<b>72</b>
Incubation time (s)	<b>2</b>	<b>5</b>	<b>10</b>
Temperature Transition Rate (°/s)	<b>20</b>	<b>20</b>	<b>20</b>
Secondary Target Temperature (°C)	0	0	0
Step Size (°C)	0	0	0
Step Delay (Cycles)	0	0	0
Acquisition Mode	None	None	<b>Single</b>

##### Melting Curve Analysis

Cycle Program Data	Value		
Cycles	1		
Analysis Mode	Melting Curves		
Temperature Targets	<b>Segment 1</b>	<b>Segment 2</b>	<b>Segment 3</b>
Target Temperature (°C)	<b>95</b>	<b>70</b>	<b>99</b>
Incubation time (s)	<b>30</b>	<b>30</b>	<b>0</b>
Temperature Transition Rate (°/s)	<b>20</b>	<b>20</b>	<b>0.1</b>
Secondary Target Temperature (°C)	0	0	0
Step Size (°C)	0	0	0
Step Delay (Cycles)	0	0	0
Acquisition Mode	None	None	<b>Continuous</b>

##### Cooling

Cycle Program Data	Value
Cycles	1
Analysis Mode	None
Temperature Targets	<b>Segment 1</b>
Target Temperature (°C)	40
Incubation time (s)	30
Temperature Transition Rate (°/s)	20
Secondary Target Temperature (°C)	0
Step Size (°C)	0
Step Delay (Cycles)	0
Acquisition Mode	None

##### LC Program Version and Fluorescence Display Mode

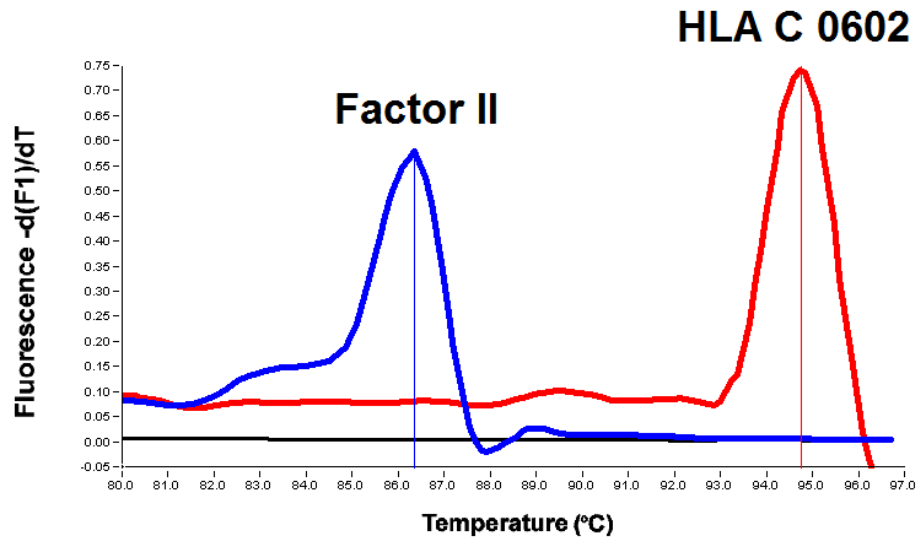
Developed with LC Program Version 3.5.

For readout use channel F1(Fluorescein).

## 5. Typical results

### Introduction

Use the Melting Curve program to genotype the human genomic DNA research samples. The melting peaks allow discrimination between presence or absence of the HLA C 0602 allele with the Factor II amplicon peak serving as positive control. The Figure shows a typical result obtained with the HLA C 0602 ToolSet™ for LightCycler™ :



### Melting curve analysis of HLA C 0602 and Factor II amplicons.

**BLUE :** HLA C 0602 **negative** Control with only Factor II amplicon present  
**RED :** HLA C 0602 **positive** Control with Factor II amplicon absent / minimal.  
**BLACK :** No DNA Control.

**Blue Cursor** (Factor II):  $T_m = 86.3\text{ }^{\circ}\text{C}$  , **Red Cursor** (HLA C 0602):  $T_m = 94.7\text{ }^{\circ}\text{C}$ .

**Note :** In presence of HLA C 0602, amplification of Factor II is strongly suppressed.

Conditions : LC program version 3.5 with automatic gain setting, No Color compensation, Digital Filter enabled, Calculation Method : Polynomial, Degrees to average : 4.5.

**Note :** The values for the respective melting temperatures may vary for +/- 2.5 °C between different experiments. The Delta T between the melting peaks for different genotypes may vary +/- 1.0 °C. The HLA C 0602 ToolSet™ has been developed for and validated with the LightCycler™ and its original accessory materials and reagents. Performance of the ToolSet with other instruments, accessories and reagents has not been validated by ratiogen.

## 7. Notices to Purchaser : Licenses and Trademarks, Prohibition of Resale

ratiogen's ToolSets™ for LightCycler™ are produced and marketed under license from Roche Diagnostics GmbH. The purchase of this product does not convey any right for its use in clinical diagnostics. No license to use the PCR process is conveyed expressly or by implication by purchase of this product. The LightCycler technology is licensed from Idaho Technology Inc., Idaho Falls, ID, USA. LightCycler and High Pure are trademarks of members of the Roche group. Resale of ratiogen's products is expressly prohibited.

### How to contact ratiogen

E-mail [info@ratiogen.com](mailto:info@ratiogen.com)

Internet <http://www.ratiogen.com>