

MTHFR A1298C (Methylentetrahydrofolat-Reductase) ToolSet™ for LightCycler™

Application on LightCycler 480

Lyophilized ToolSet for PCR using the LightCycler™ Instrument. Licensed by Roche Diagnostics GmbH

Order#: MTHFR 1298 - 16

1 ToolSet for 16 reactions

Store at 4°C, protected from light.
Exposure to light may especially damage the Oligotool™ tube (vial with red cap).

For use with **LightCycler Fast Start DNA Master HybProbes, 10 x conc. (Roche Cat.No.: 03003248001)** and **LightCycler® 480 Multiwell Plates 96, white (Roche Cat.No.: 04729692001)**

1. ToolSet contents

Vial	Label	Content	Quantity
			MTHFR 1298 - 16
1, Red cap	OligoTool	- lyophilized oligos for PCR - contains mutation detection and anchor probe, primers	For 16 tests Dissolved: 50 µL
2, Green cap	Control	- lyophilized heterozygous DNA	Dissolved: 20 µL
3, Blue cap	Solvent	- to dissolve OligoTool / Control	1000 µL of Solvent

Additional equipment and reagents required but not supplied :
LightCycler® Fast Start DNA Master HybProbes, 10 x conc.Cat.No.: 03003248001, including 25mM MgCl₂;
LightCycler® 480 instrument, LightCycler® 480 Multiwell Plates 96 white, DNA extraction materials

2. Introduction

2.1. Product overview

ToolSet description This ToolSet is specifically designed for genotyping the A1298C polymorphism in the Methylentetrahydrofolatreductase (MTHFR) gene by LightCycler PCR with Melting Curve Analysis. The primer pair and fluorescent detection and anchor probes have been optimized for specific amplification of a 163 bp segment containing the potentially mutated site and for optimal genotype discrimination.

Control material Heterozygous control DNA, lyophilized.

Storage of ToolSet and Solutions Store at +4°C when lyophilized, protected from light. The unopened lyophilized ToolSet is stable at +4°C for 12 months from date of manufacture if protected from light. When dissolved store at +4°C for a maximum of 4 weeks, or at -20°C for longer periods (months), protected from light. Avoid freezing and thawing > 3 times.

3. Preparation for LightCycler PCR

Toolset preparation **Dissolve** the content of the **OligoTool** tube (Red Cap) with **50 µl of Solvent**.
Dissolve the content of the **Control** tube (Green Cap) with **20 µl of Solvent**.

1. Before opening tubes, centrifuge them quickly.
2. Add Solvent into OligoTool tube and Control tube as above.
3. Recap tubes, vortex gently.
4. Before opening tubes, centrifuge them quickly.
5. Proceed to Reaction Mix preparation.

Primers ? You don't have to add primers.

Probes ? You don't have to add probes.

Reaction Mix Preparation For 1 (One) reaction, prepare the Reaction Mix as shown in the following table :

Reagent	µL
OligoTool MTHFR 1298 -16, dissolved	2.8
Solvent MTHFR 1298 -16	9.2
MgCl ₂ 25 mM	2.0 (final 3.5 mM)
Fast Start DNA Master HybProbes, 10x	2
Total Reaction Mix	16
+ Your DNA or Control MTHFR 1298 -16	4
Grand Total	20

Use Fast Start DNA Master Hybridization Probes 10x and MgCl₂ 25 mM from Roche LightCycler Fast Start DNA Master Hybridization Probes, 10 x conc. (Roche Cat.No.: 03003248001, including 25mM MgCl₂).
For multiple reactions, multiply the indicated volumes appropriately.

Positive Control Always run a positive control with the samples. Use the dissolved heterozygous Control MTHFR 1298 - 16 DNA (Green Cap).

Negative control Always run a negative control with the samples. To prepare a negative control, replace the template DNA with Solvent (Blue Cap).

Extraction of genomic DNA You can use different Kits for DNA isolation, either with a manual method or with an automated system. The elution buffers should be salt-free. Example : Roche High Pure PCR Template Preparation Kit (Cat.No. 1 796 828)

Application The **MTHFR A1298C** ToolSet™ for LightCycler™ allows detection of the **A1298C** single nucleotide polymorphism in the MTHFR gene, causing a Glutamate (E)-to-Alanine (A) exchange, with the Alanine-containing enzyme being less active.
MTHFR 1298 C has been associated with hyperhomocysteinaemia in end-stage renal disease, neural tube defects (spina bifida, nonsyndromic cleft lip and Down's syndrome), development of cancers and leukaemia and **toxicity of anti-folate drugs like Methotrexate**.

Note : This ToolSet was developed for use in life science research only.

4. LightCycler 480 Settings and Experimental Protocol

For use with LC 480 Program Version 1.5 series. Detection : Dynamic Red 640 (498-640 nm).

Fast Start Enzyme Activation and DNA Denaturation

Cycle Program Data	Value
Cycles	1
Analysis Mode	None
Temperature Targets	Segment 1
Target Temperature (°C)	95
Incubation time (s) Hold	600
Temperature Transition Rate (°C/s) Ramp Rate	4.4
Acquisitions (per °C)	---
Secondary Target Temperature (°C)	0
Step Size (°C)	0
Step Delay (Cycles)	0
Acquisition Mode	None

Amplification

Cycle Program Data	Value		
Cycles	40		
Analysis Mode	Quantification		
Temperature Targets	Segment 1	Segment 2	Segment 3
Target Temperature (°C)	95	60	72
Incubation time (s) Hold	5	10	15
Temperature Transition Rate (°/s) Ramp Rate	4.4	2.2	4.4
Acquisitions (per °C)	---	---	---
Secondary Target Temperature (°C)	0	0	0
Step Size (°C)	0	0	0
Step Delay (Cycles)	0	0	0
Acquisition Mode	None	Single	None

Melting Curve Analysis

Cycle Program Data	Value		
Cycles	1		
Analysis Mode	Melting Curves		
Temperature Targets	Segment 1	Segment 2	Segment 3
Target Temperature (°C)	95	40	85
Incubation time (s) Hold	30	120	---
Temperature Transition Rate (°/s) Ramp Rate	4.4	1.5	0.29
Acquisitions (per °C)	---	---	2
Secondary Target Temperature (°C)	0	0	0
Step Size (°C)	0	0	0
Step Delay (Cycles)	0	0	0
Acquisition Mode	None	None	Continuous

Cooling

Cycle Program Data	Value
Cycles	1
Analysis Mode	None
Temperature Targets	Segment 1
Target Temperature (°C)	40
Incubation time (s) Hold	30
Temperature Transition Rate (°/s) Ramp Rate	1.5
Secondary Target Temperature (°C)	0
Step Size (°C)	0
Step Delay (Cycles)	0
Acquisition Mode	None

5. Typical results

Introduction

Use the Melting Curve program to genotype the human genomic DNA research samples. The melting peaks allow discrimination between the possible genotypes of the A1298C polymorphism in the MTHFR gene. Figure 1 shows a typical result obtained with the MTHFR A1298C ToolSet™ for LightCycler™ :

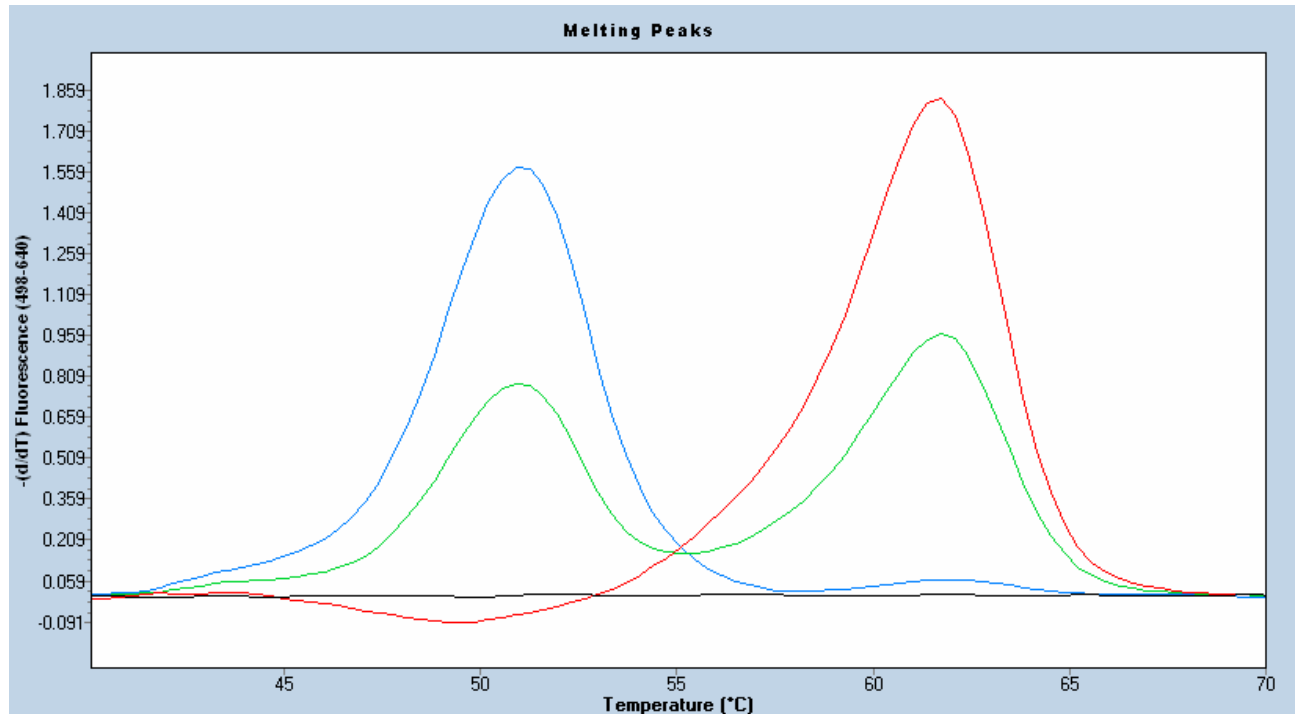


Figure 1 : Melting curve analysis of genotypes of the A1298C polymorphism in the MTHFR gene.

- BLUE :** Homozygote for **AA1298** ($T_m = 51\text{ }^\circ\text{C}$, wild type)
RED : Homozygote for **1298CC** ($T_m = 61.5\text{ }^\circ\text{C}$)
GREEN : Heterozygote **A1298C** = Control **MTHFR A1298C HET** contained in the ToolSet.
BLACK : No DNA Control.

Conditions : LC 480 program version 1.5, No Color compensation,

Note : The values for the respective melting temperatures may vary for +/- 2.5 °C between different experiments. The Delta T between the melting peaks for different genotypes may vary +/- 1.0 °C. The MTHFR A1298C ToolSet™ has been developed for and validated with the LightCycler™ and its original accessory materials and reagents. Performance of the ToolSet with other instruments, accessories and reagents has not been validated by ratiogen.

7. Notices to Purchaser : Licenses and Trademarks, Prohibition of Resale

ratiogen's ToolSets™ for LightCycler™ are produced and marketed under license from Roche Diagnostics GmbH. The purchase of this product does not convey any right for its use in clinical diagnostics. No license to use the PCR process is conveyed expressly or by implication by purchase of this product. The LightCycler technology is licensed from Idaho Technology Inc., Idaho Falls, ID, USA. LightCycler and High Pure are trademarks of members of the Roche group. Resale of ratiogen's products is expressly prohibited.

How to contact ratiogen

E-mail info@ratiogen.com

Internet <http://www.ratiogen.com>